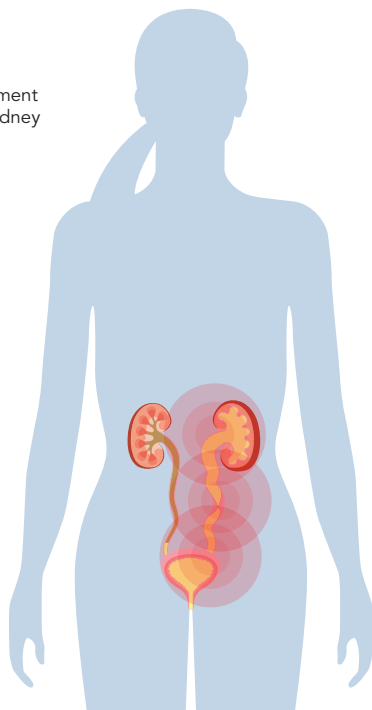
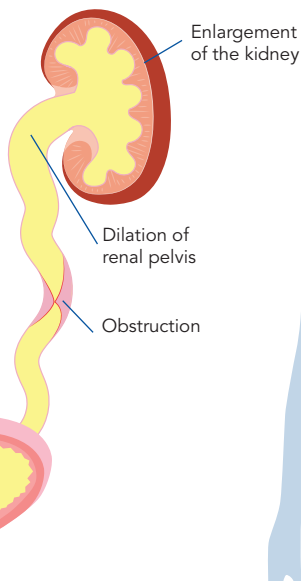


Your DMSA Renal Scan Journey

NORMAL KIDNEY



ABNORMAL KIDNEY

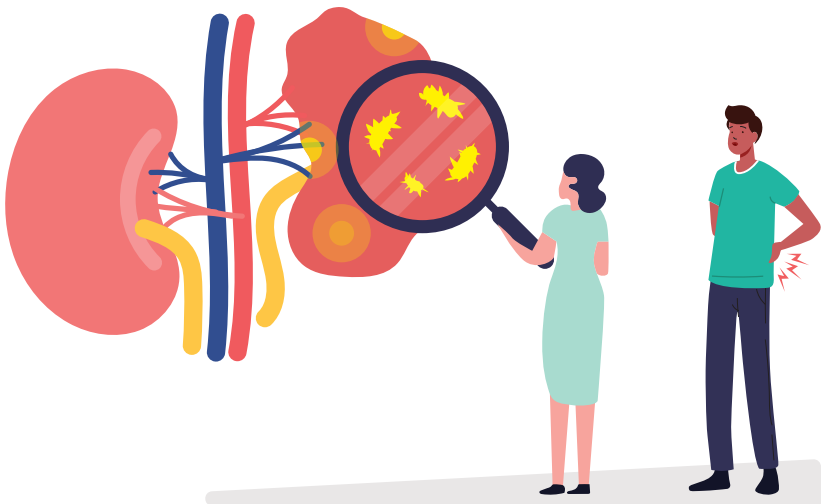


This booklet is designed to provide you with essential information about the DMSA Renal Scan, a procedure that helps assess kidney function and detect potential issues.

We aim to make you feel informed and at ease every step of the way. If you have any questions, don't hesitate to contact your doctor or the nuclear medicine team—we are here to support you.

What is a DMSA Renal Scan?

A DMSA (Dimercaptosuccinic Acid) Renal Scan is a nuclear medicine test used to evaluate kidney function, structure, and any potential damage or infection. The test involves the injection of a small amount of a radioactive substance (DMSA) into your bloodstream. This tracer is absorbed by the kidneys, allowing a special camera (gamma camera) to capture images and assess how well your kidneys are functioning and whether there are any abnormalities.

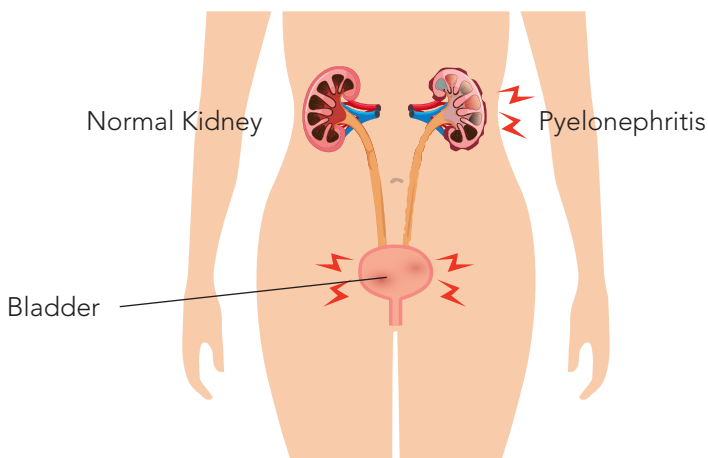


Why You Might Need This Scan

Your doctor may recommend a DMSA Renal Scan for several reasons, including:

- To evaluate kidney function, especially in patients with kidney disease or suspected damage
- To assess for scarring or damage caused by previous infections (such as pyelonephritis)
- To check kidney function in children with recurrent urinary tract infections (UTIs)
- To investigate kidney anatomy and detect any structural abnormalities
- To monitor the kidneys in patients who have had a kidney transplant.

The DMSA Scan provides highly detailed images of the kidneys, helping your doctor make informed decisions regarding treatment and care.



How to Prepare for Your DMSA Renal Scan

Please follow these guidelines to ensure the best results from your DMSA Renal Scan.

- **Hydration:** Drink plenty of fluids in the days leading up to the Scan to ensure your kidneys are functioning well.
- **Fasting:** You may be asked to avoid food and drink for a few hours before your Scan. Please follow the specific instructions from your doctor or the nuclear medicine team.
- **Medications:** Continue taking your regular medications unless your doctor advises otherwise. Bring a list of your current medications to your appointment.
- **Pregnancy:** If you are pregnant, planning to become pregnant, or breastfeeding, please inform the nuclear medicine team before the test so they can assess whether it is appropriate for you.



What to Expect on the Day

Here's what you can expect when you come to the hospital for your DMSA Renal Scan.

STEP 1 **Arrival and Check-In**

Please arrive 15 minutes early and check in at the front desk. A member of our nuclear medicine team will meet you and escort you to the nuclear medicine department.

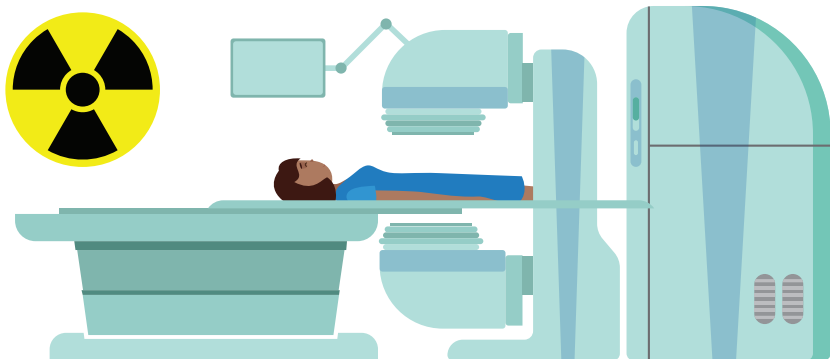
STEP 2 **Briefing**

The procedure will be explained to you, and you will have the opportunity to ask any questions you may have.

STEP 3 **IV Line and Tracer Injection**

A nurse will insert an IV cannula into your arm for the injection of a small amount of radioactive tracer. You may feel a slight pinch or discomfort during the injection.





STEP 4 **Scanning**

After the injection, you will be asked to lie on a table while the gamma camera takes images of your kidneys. The camera will be positioned above your abdomen, but it will not touch you. The Scan typically takes about 20–30 minutes, during which you will need to remain still. The camera will move around you to capture the images.

STEP 5 **Post-Scan**

A nurse will remove your IV line and you will be allowed to go home. There are no special restrictions after the procedure so you can resume your usual activities.

What Are the Risks of a DMSA Renal Scan?

The benefits of the test far outweigh the minimal risks associated with radiation exposure. The amount of radiation used in a DMSA Renal Scan is very small and is considered to be safe for most patients. However, if you are pregnant or breastfeeding, please inform the team prior to the test so they can assess whether the Scan is suitable for you.

FAQs

These are some commonly asked questions about the DMSA Renal Scan.



Q: Does the DMSA Renal Scan hurt?

A: The Scan itself is painless. The only discomfort may come from the injection, which can cause a brief pinch or sting. Most patients tolerate this well.

Q: Is the DMSA Renal Scan safe?

A: Yes, the DMSA Renal Scan is considered very safe. The radiation used is minimal, and the benefits of the Scan in diagnosing kidney issues far outweigh the risks.

Q: Will I be able to drive home after the Scan?

A: Yes, you can drive and resume your normal activities after the Scan.

Q: How long does the DMSA Renal Scan take?

A: The entire procedure typically takes about 1 to 2 hours, including the injection and the Scan itself. Most of this time will be spent waiting for the tracer to be absorbed by your kidneys before the imaging begins.

Q: How long will it take to get the results?

A: The results of your Scan will be sent to your referring doctor within 24–48 hours. Your doctor will schedule a follow-up appointment to discuss the results and any next steps.

HEALTH CITY
Cayman Islands 

Health City Patient Support
info@healthcity.ky
Health City Connect App
 healthcity.ky



HEALTH CITY
+1 345 640 4040
1283 Sea View Road,
Grand Cayman, Cayman Islands