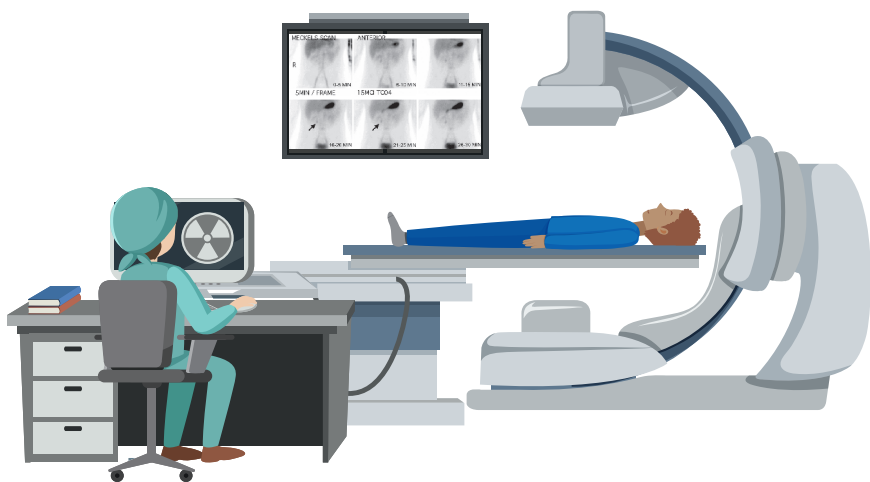


Your Meckel's Diverticulum Scan Journey



This booklet explains what to expect during your Meckel's Scan – a nuclear medicine test used to detect abnormal tissue in the lower small intestine.

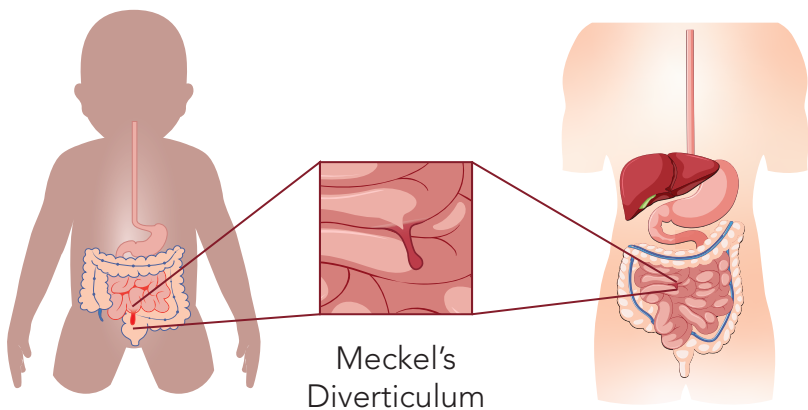
We aim to make you feel informed, comfortable, and supported throughout your visit.

We are committed to the highest standard of care. If you have any questions, please speak with your doctor or the nuclear medicine team.

What is a Meckel's Diverticulum Scan?

A Meckel's Scan detects the presence of Meckel's diverticulum, a small pouch in the wall of the small intestine that can contain stomach-like tissue. This tissue may secrete acid and cause bleeding, especially in children and young adults.

The Scan uses a small amount of radioactive tracer (technetium-99m pertechnetate) that is absorbed by stomach tissue. If stomach tissue is present in the diverticulum, it will show up on the Scan.



Why This Scan May Be Needed

Your doctor may refer you for a Meckel's Scan if you or your child has:

- Unexplained gastrointestinal bleeding
- Abdominal pain
- Suspected Meckel's diverticulum
- Blood in the stool (especially in children)
- Anaemia of unclear cause.

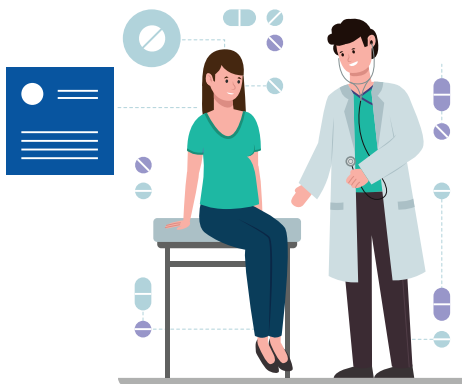
This Scan is especially useful when other imaging or investigations have not revealed the source of bleeding.



How to Prepare for Your Scan

Please follow these guidelines for the most accurate results:

- **Fasting:** Do not eat or drink for 4–6 hours before the Scan (check your appointment letter for specifics).
- **Medications:** Some medications may interfere with the Scan. Inform your doctor or the nuclear medicine team if you or your child take:
 - Antacids
 - Steroids
 - Certain stomach medications (e.g., ranitidine, omeprazole)
- Bring a medication list with you.
- **Pregnancy/Breastfeeding:** Inform us if the patient is pregnant or breastfeeding.
- For young children, you may be asked to bring a bottle, snack, toy, or comfort item for after the test.



What to Expect on the Day

STEP 1 **Arrival and Check-In**

Please arrive 15 minutes early and check in at the front desk. A member of our nuclear medicine team will meet you and escort you to the nuclear medicine department.

STEP 2 **IV Line and Tracer Injection**

A nurse will insert an IV cannula into your arm for the injection of a small amount of radioactive tracer.

STEP 3 **Imaging**

- You or your child will lie still on a Scanning bed for approximately 30–60 minutes.
- A gamma camera will take continuous images of the abdomen to track where the tracer goes.
- It is important to stay as still as possible during the Scan. Sedation is not usually needed but can be discussed if necessary for very young children.

STEP 4 **After the Scan**

- You may eat and drink as normal.
- No special precautions are needed.
- Encourage plenty of fluids to help clear the tracer from the body.
- Results will be sent to your referring doctor within a few days.

FAQs

These are some common questions about
Your Meckel's Diverticulum Scan Journey.

Q: Is the Scan safe?

A: Yes. The tracer used is very safe, with a low level of radiation. It is eliminated naturally through the urine.

Q: Will it hurt?

A: The only discomfort is from the injection. The Scan itself is painless.

Q: How long does the Scan take?

A: The whole process usually takes 1 to 1.5 hours, including preparation and imaging time.

Q: Can I be with my child during the Scan?

A: Yes. Parents are encouraged to stay with young children for reassurance. A lead apron may be provided.

Q: Are there any side effects?




A: Side effects are extremely rare. The radioactive tracer does not cause allergic reactions or long-term effects.

Q: Can I return to normal activities afterwards?

A: Yes. You or your child can return to school, work, or normal daily routines immediately.

HEALTH CITY
Cayman Islands 

Health City Patient Support
info@healthcity.ky
Health City Connect App
 healthcity.ky

 **HEALTH CITY**
 +1 345 640 4040
 1283 Sea View Road,
Grand Cayman, Cayman Islands